

# IMPASSE MARIE-BLANCHE

Wooden structure housing in Paris





# IMPASSE MARIE- BLANCHE

---

*« 5 500 m<sup>2</sup> of wooden structure  
housing in Paris »*

# Credits

**Project :**

Construction of 28 houses, a  
nursery and parkings

**Client :**

ALTAREA COGEDIM

**Surface area :**

5 500 m<sup>2</sup>

**Status :**

delivered in 2017

**Architect :**

Agence d'Architecture A. Bechu  
& Associés

Chef de projet :

Mounir Soubai, associé



# Introduction

The «5 Impasse Marie-Blanche» programme was delivered in 2017, the project included 28 flats, one nursery school and several car parking spaces in the heart of the 18th arrondissement of Paris. With its wooden superstructure, «5 Impasse Marie-Blanche» meets high environmental requests and offers an original concept in the heart of Paris, a concept designed for the inhabitants' well-being.



*Lying in the heart of the mythical Butte Montmartre district and surrounded by green spaces, Impasse Marie Blanche offers the calm of a small residential street that seems to have stepped out of the history of Paris. The main use of wood and other*

## Some words on the project

**T**he choice of wood has been made for the frame and the façades on the ground, first and second levels.

This construction mode, usually mostly applied to nursery and primary schools or to individual houses, is a real innovation in the case of an urban housing building.

Besides, using wood reduces the length and nuisances of the works, which is a crucial advantage for such a dense urban area as the 18th arrondissement. It also allows to better meet the ambitious objectives set out by the Paris Climate Programme.

*« Lying in the heart of the mythical Butte Montmartre district and surrounded by green spaces, Impasse Marie Blanche offers the calm of a small residential street that seems to have stepped out of the history of Paris. The main use of wood and other renewable materials results in a clearly contemporary architecture opening onto the outside world through particularly large openings and generously proportioned terraces and gardens. The architecture is particularly respectful of the environment. » Anthony Bechu*



Impasse Marie-Blanche

The programme is perfectly integrated in its urban environment. Its design is a juxtaposition of «small houses» or simple parallelepipeds, crowned with green copper lines and patches reminding the traditional parisain rooves around. The flats, from one to five rooms, are separated by vertical strips lush with green vegetation.

The project largely opens on the outside. Broad glass windows open on terraces or gardens. Due to the quality of its heat insulation, to the performances of the technical equipement and the use of natural and sustainable material such as wood and copper, the programme meets the environmental commitments set by the CLient, Altarea Cogedim. The housing units to be sold will be certified NFDémarche HQE® (High Environmental Quality) and the social housing units H&E ® (Habitat & Environnement).

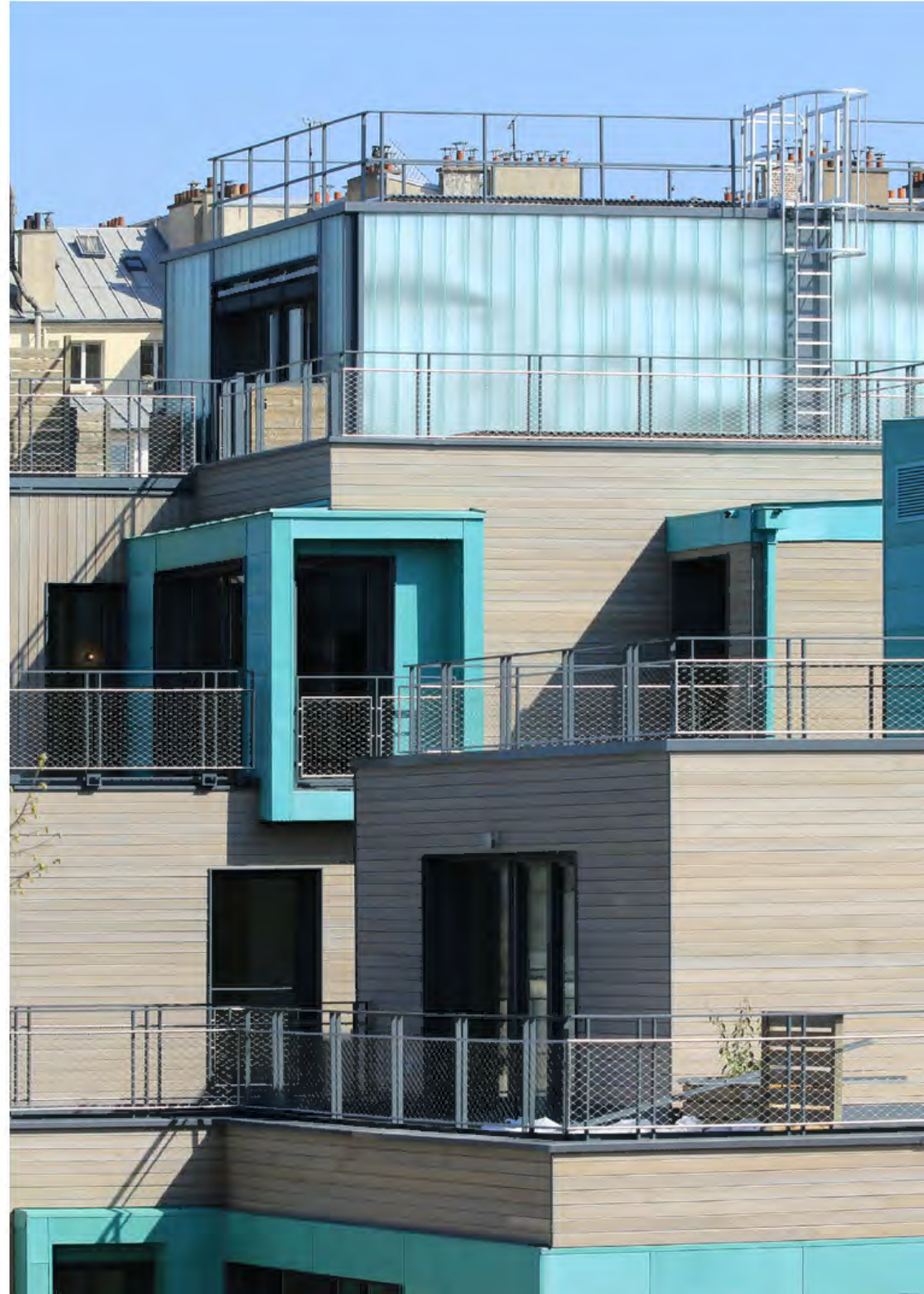
This audacious project, in the heart of a protected historical site, has been subject to intensive concertation within the neighbourhood.







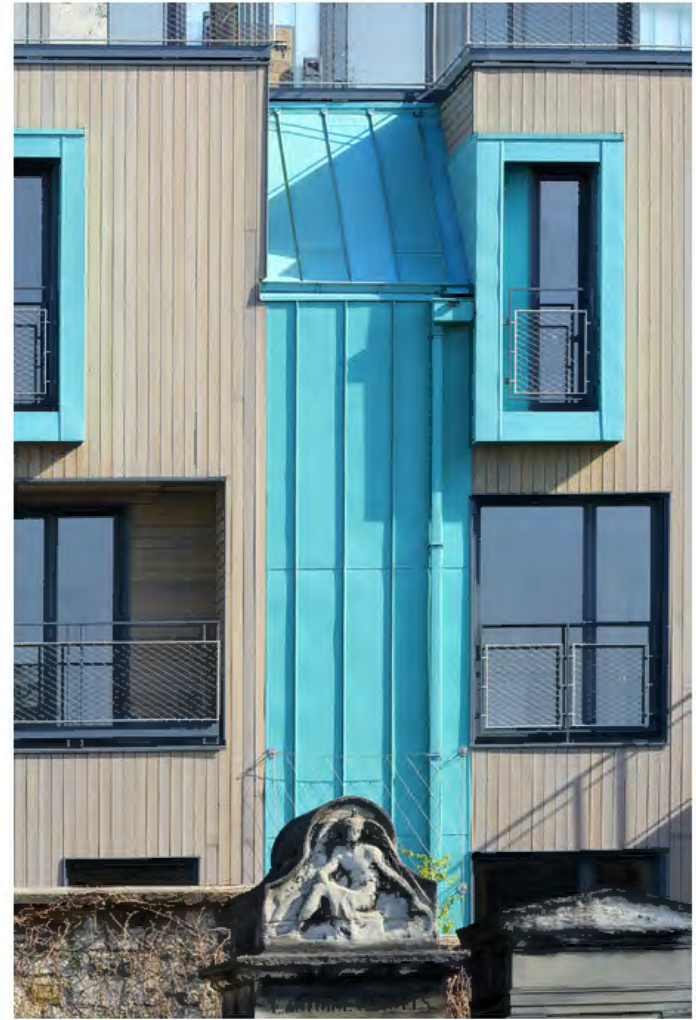








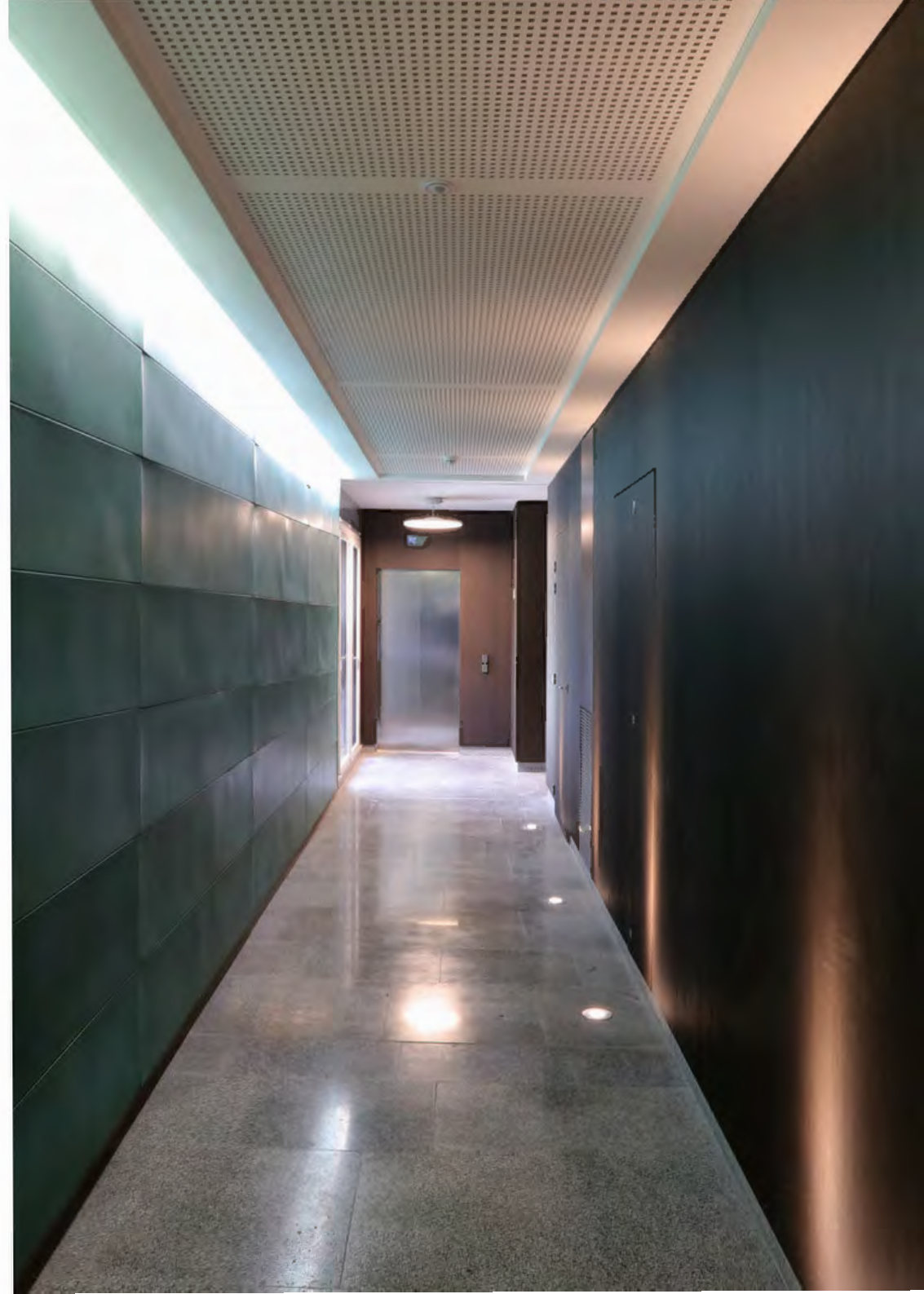
















82, rue Lecourbe 75015 Paris

T. +33 1 47 34 97 91

[www.anthonybechu.com](http://www.anthonybechu.com)